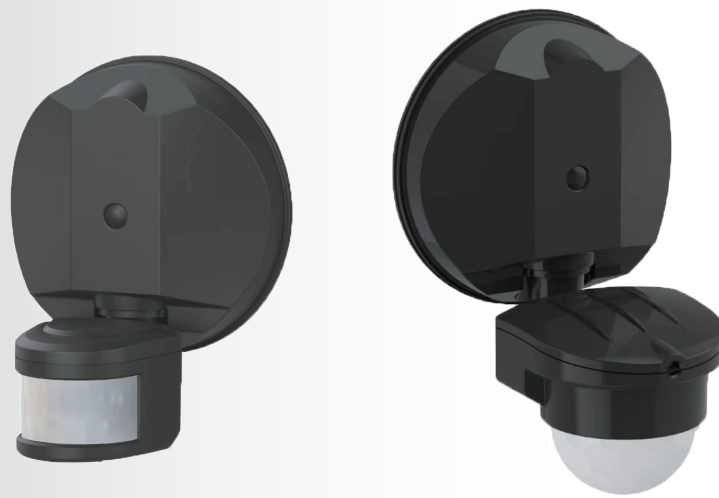




PIR OUTDOOR MOTION DETECTOR

PASSIVE INFRARED MOTION DETECTOR



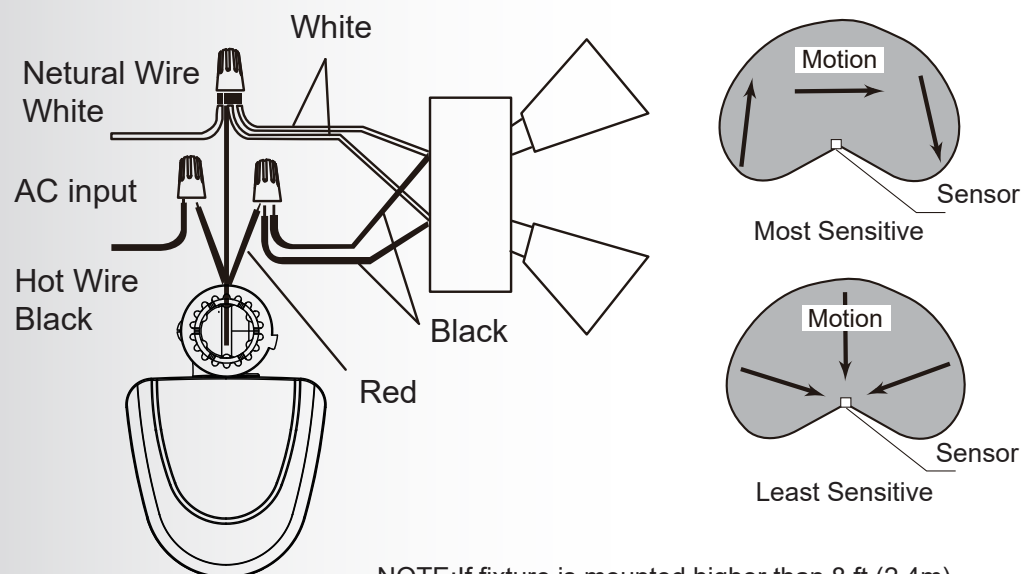
Aeolux Passive Infrared (PIR) outdoor motion sensors providing reliable value in safety as well as energy savings lighting requirement. Two models outdoor motion sensors are designed to be detected 150° and 240° wide angle detection. Each device built in dusk to dawn sensor and power on timer and brightness lux as well as sensitivity setting switch.

It is ideal for a wide range of commercial and residential applications

Feature

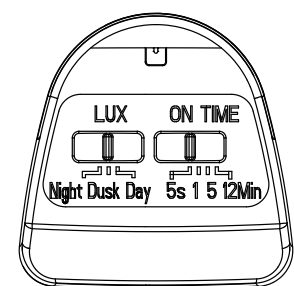
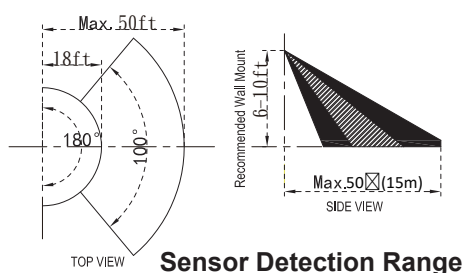
- Passive infrared(PIR) motion technology
- 110VAC ~ 240VAC power input
- Two models can be detect 150° or 150° angle ranges
- Dusk to dawn mode power by internal CDS(photocell)
- Adjustable sensitivity switch.
- Adjustable timer switch
- Designed for wall or eave mount

Wiring and motion detection

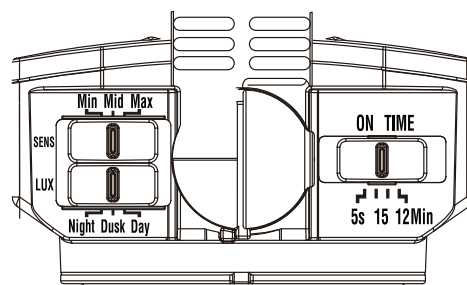
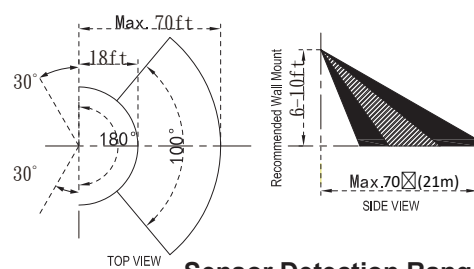


NOTE: If fixture is mounted higher than 8 ft.(2.4m), aiming the sensor down will reduce coverage distance. The detector is less sensitive to motion directly towards it.

A82141 ~ A82142 Setting



A82141 / A82142



A82143 / A82144

TIME SETTING

The TIME setting control show long the unit remains illuminated following activation and after all motion ceases. The minimum time(slide switch) is approx. 5 seconds, the maximum time(slide switch) is approx. 12 minutes. Set the slide switch to control to the desired setting between these limits.

LUX SETTINGS

The LUX settings controls when the light will come on; it controls the amount of light needed to turn the light on. The LUX setting is marked by a sun and moon. Use one of the three predetermined settings as illustrated. To adjust the light to come on when it is darker outside slide the switch to "Night"; to adjust the light to come on at dusk slide the switch to "Dusk". To adjust the light to come on when it is lighter outside slide the switch to the "Day".

SENS SETTINGS(A82143 and A82144 Only)

The SENS slide switch knob control:

Set the slide switch knob to the "Min" position The sensor is low sensitivity setting.

Set the slide switch knob to the "Mid" position The sensor is generally sensitivity setting.

Set the slide switch knob to the "Max" position The sensor is high sensitivity setting.

Specification

| Product | Wide Beam Angle Security LED Motion Light | | | |
|---------------------|---|--------|-----------------------|--------|
| Model | A82141 | A82142 | A82143 | A82144 |
| Body Color | White | Black | White | Black |
| Detect Angle | 150° x 5ft.(15M) | | 240° x 6.5ft.(20M) | |
| Dimension W x D x H | 3.15" x 4.14" x 3.47" | | 3.15" x 4.14" x 3.47" | |
| Voltage | 110VAC ~ 240VAC 50/60Hz | | | |
| Rated Load | 10A maximum | | | |
| IP Rating | IP54 | | | |
| Timer on Adjustment | 5 Sec. / 1 Min. / 5 Min. / 12 Min. | | | |
| Lux Adjustment | Night / Dusk / Day | | | |
| Detecting Method | Passive Infrared Sensor | | | |
| Dusk to Dawn Type | CDS | | | |
| Housing Material | Polycarbonate Casting | | | |