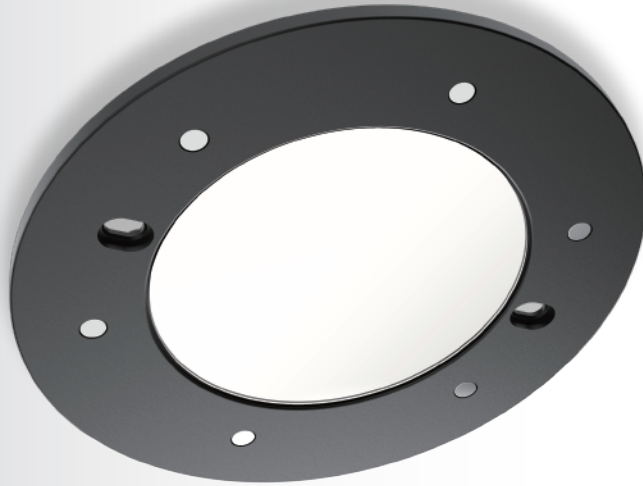




ULTRA THIN SURFACE MOUNT DOWN LIGHT

# MAGNETIC DOWN LIGHT

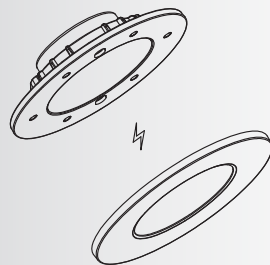


Aecolux's engineering magnetic down light design is ultra thin with only 0.2" in thickness. It has the ability to interchange color trims. Our design allows the installer the flexibility of installing on a surface mount, junction box, recessed mount, or by a can mount.

## Feature

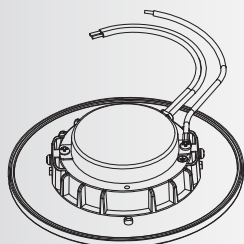
- Ultra thin 0.2" design
- Color trims are interchangeable with our magnetic plate
- Fully dimmable and suitable for both leading edge and trailing edge dimmers
- Integrated LEDs does not require a bulb
- Single-color temperature down light is available in 3000K, 4000K and 5000K
- Suitable for wet locations

## Install Trim

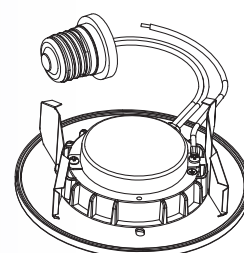


- Trims are sold separately
- Color trims are available in white, black, and satin nickel
- Trims are easily installed to the magnetic plate

## Mounting

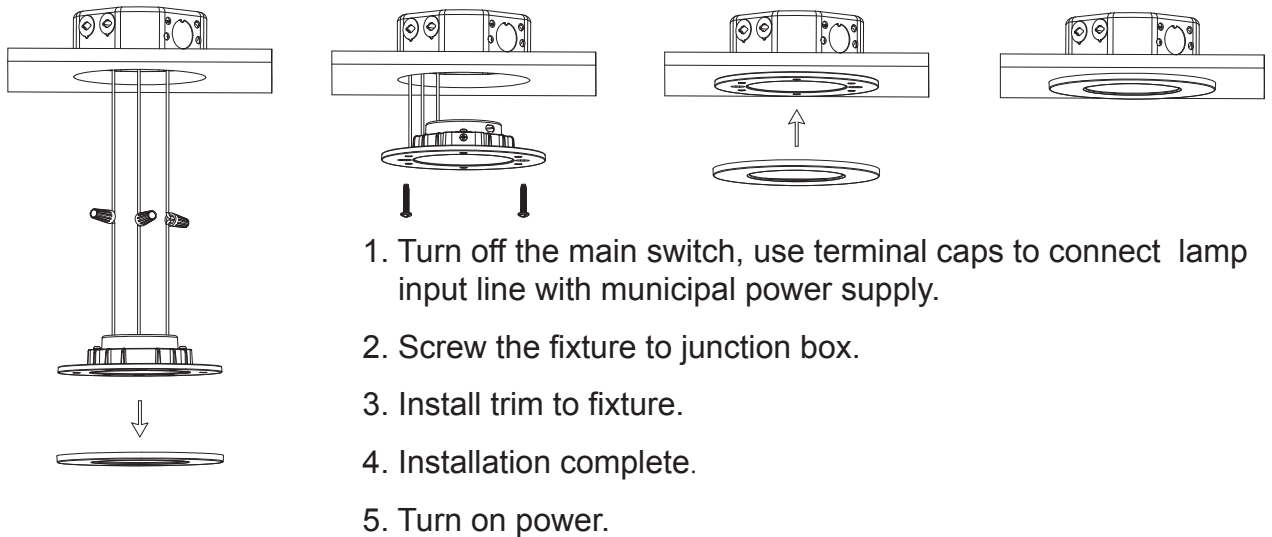


Surface Mount



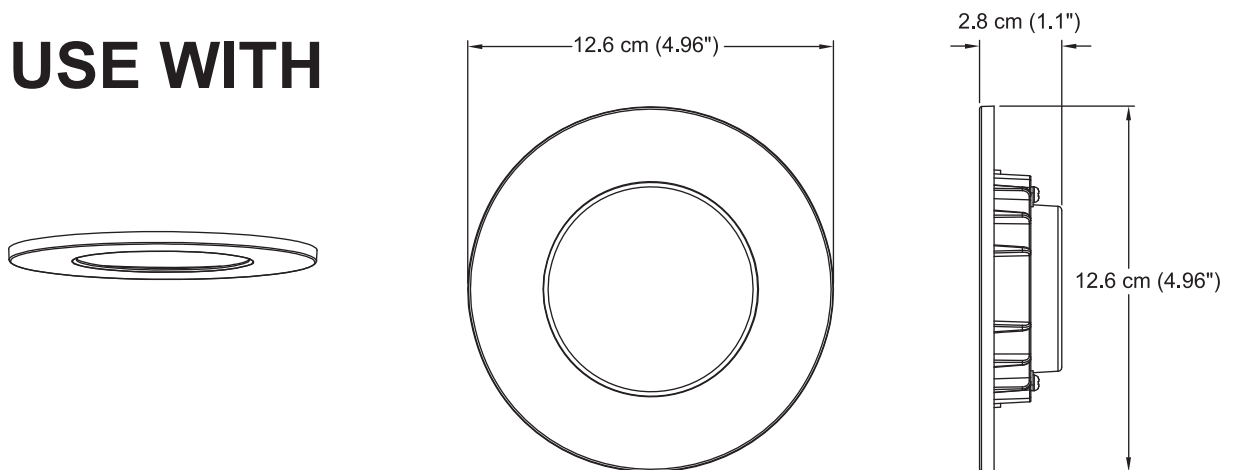
Optional E26 Lamp base accessories for recessed mount in CAN.

## Installation



## Dimension

### USE WITH



## Specification

Product	Magnetic Down Light		
Model	A30411	A30412	A30413
Color Temperature	3000K	4000K	5000K
Voltage	120VAC 50/60Hz		
Wattage	9.5W		
Dimmable	Dimmable		
Luminous	730 Lumens		
Trim installation	By magnets on the fixture (sold separately)		
Diffuser Material	Glass		
Beam Angle	> 120°		
LED Lifespan	50,000 Hours		
Location	Wet Location		
Housing Material	Aluminum Die Casting		
Dimension W x H x D	5.83" x 5.20" x 1.42"		
Lifetime	3 Years		