

品名：A17041黄盒-A2
料号：711864
规格：L284xW284xH68mm
材质：250G牛卡裱B9加强芯（T=3mm）

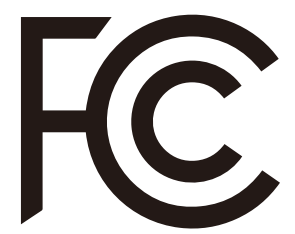
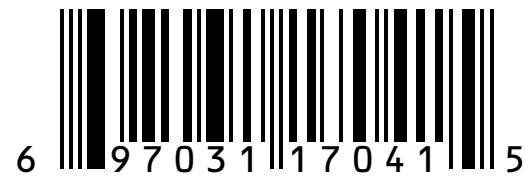
贴合面

坑纹方向



12"
ULTRA SLIM
LED Modern Flush Mount 16W

120V 60Hz 16W 1350Lm 3000K
Dimmable **A17041**



MADE IN CHINA
Model: S12AA

Installation Instruction

IMPORTANT SAFEGUARDS

- When using electrical equipment, basic safety precautions should always be followed including the following:
- Important safety instructions
 - Read and understand these instructions before installing this fixture into luminaire.
 - To prevent electrical shock, turn OFF electricity at fuse box before proceeding.
 - This fixture is intended for installation in accordance with the National Electrical Code (NEC) and Local Regulations in non-hazardous locations. To assure full compliance with local codes and regulations check with your local electrical inspector before installation. Retain these instructions for maintenance reference.

WARNING

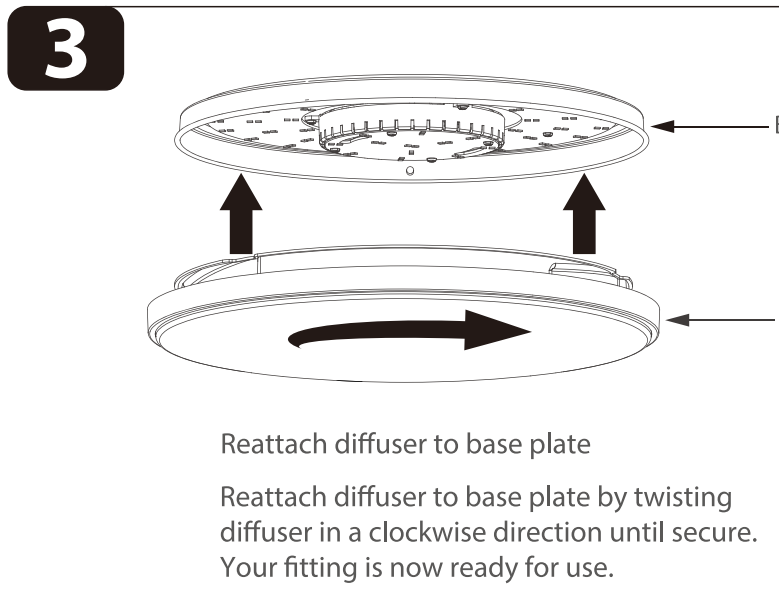
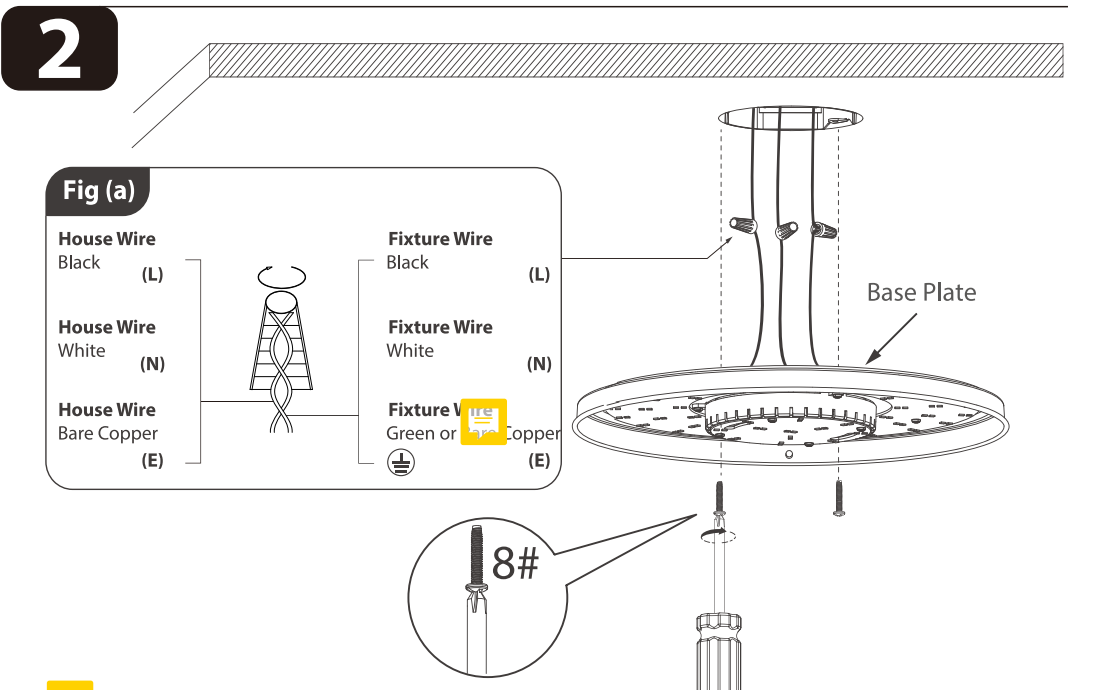
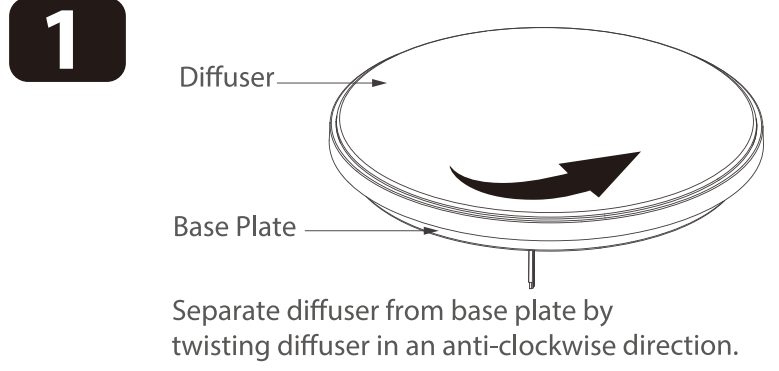
- Risk of fire or electric shock. LED ceiling lighting requires knowledge of luminaires electrical systems.
- If not qualified, do not attempt installation. Contact a qualified electrician.
- Risk of fire or electric shock. Install this fixture only in the luminaires that have the construction features and dimensions shown in the photographs and/or drawings.
- To prevent wiring damage or abrasion, do not expose wiring to edges of sheet metal or other sharp objects.
- Risk of electric shock. Do not use where directly exposed to water. Do not make or alter any open holes in an enclosure of wiring or electrical components during fixture installation.



PACKAGE CONTENTS (EACH)

- | | |
|---------------------------|--------|
| [1] Wire Connector | x 3pcs |
| [2] Mounting Screw 8#x32 | x 2pcs |
| [3] Diffuser & Base Plate | x 1pc |

A17041 Product Specification	
Voltage	110-130 VAC
Wattage	16W
Lumen output	1350Lm
Color temperature	3000K
Beam angle	170°
Diameter	11.2"
Height	2.1"



Securely fix base plate onto mounting surface.
Connect existing house wires to fixture wires (refer to Fig. 2).
Once connected properly, put the base plate onto ceiling or wall and align the mounting slot of base plate to the screw holes of the junction box, then secure by screwing the 2 mounting screws onto the junction box.

1
284.0±1.0

66.0

2
284.0±1.0

68.0±1.0

3